



HMS CAROLINE
BELFAST

HMS Caroline

Access Guide



HMS CAROLINE

BELFAST

Introduction

HMS Caroline is a restored First World War Light Cruiser and the last survivor of the Battle of Jutland, which has been converted into a floating museum and visitor attraction. Visitors can experience a mixture of historic spaces and hands-on interactive exhibits. HMS Caroline is one of the most accessible historic ships in the UK.



The museum is open:

- April – June and October – March: Wednesday to Sunday
10.00am – 5.00pm.
- July – September and school holiday periods: Monday – Sunday
10.00am – 5.00pm
- Last admission is 4.00pm, but we do advise you to leave at least
1 hour and 30 minutes for your visit.



HMS CAROLINE

BELFAST

Getting Here

By train:

Titanic Quarter Station is the nearest train station. From there take the pedestrian footbridge into Titanic Quarter and turn left onto Sydenham Road. Turn right onto Queen's Road. It is just over 1 mile from the train station to HMS Caroline.

By road:

Vehicles approaching Belfast on the M1 or M2 should follow the signs to Belfast City Airport M3, taking the first exit for Titanic Quarter. We have free parking available on site.

By glider:

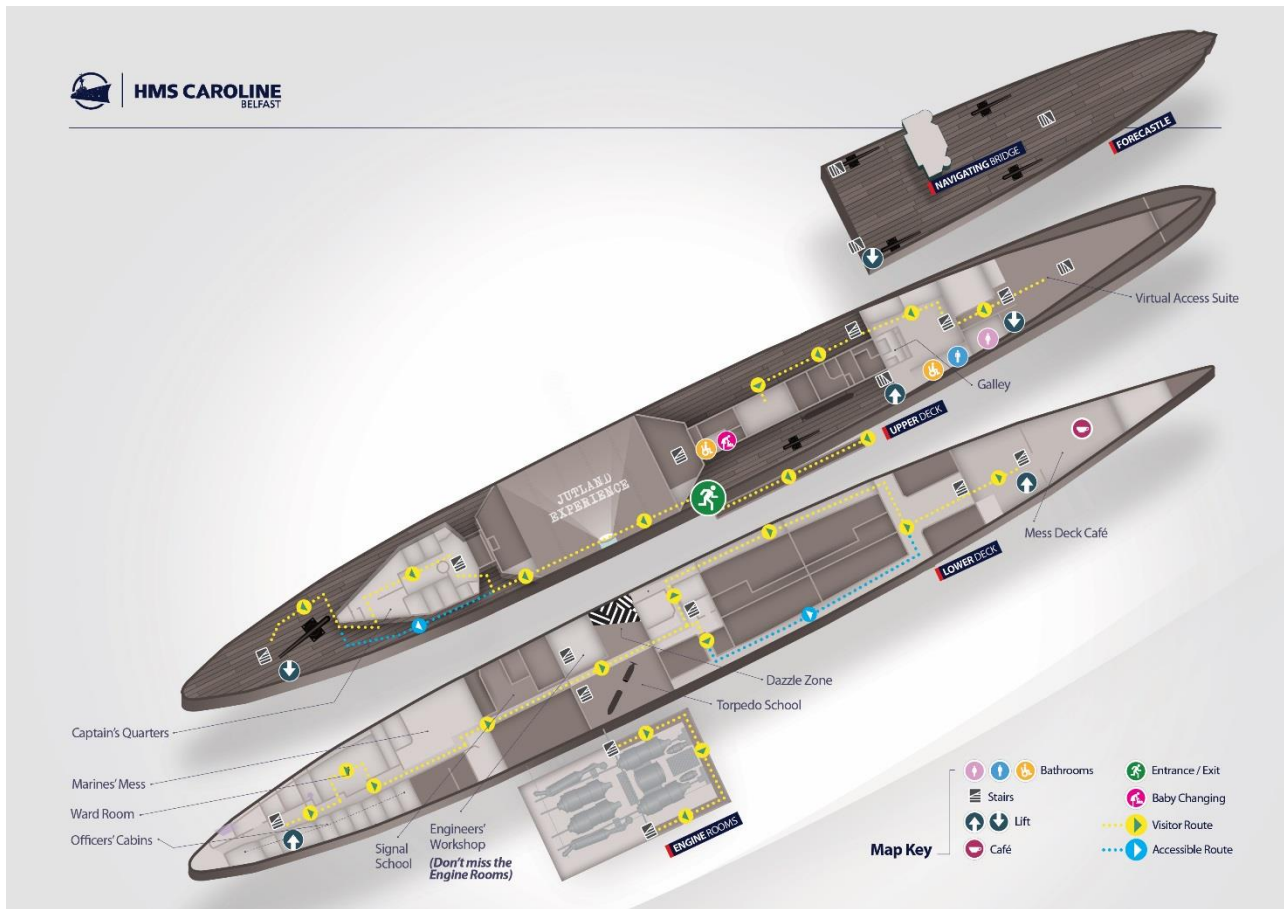
Glider service G2 departs from the City Centre (**Wellington Place**). Alight at stop **Catalyst Inc (Queen's Road)**. Journey time is approximately 10 minutes from the City Centre.





HMS CAROLINE

BELFAST



Car parking and arrival

- The ship has a car park with accessible parking spaces.
- There are 4 accessible parking spaces.
- There is an additional coach parking area and turning circle.
- The car park closes at 5.30pm.



HMS CAROLINE

BELFAST



Car Park Entrance



Car Park Spaces



HMS CAROLINE

BELFAST

- Visitors make their way from the car park across the wooden bridge and into the Pump House alongside the ship. Entrance tickets can be purchased inside the Pump House. The Pump House is accessible by steps or ramp.



Bridge to Pump House



HMS CAROLINE

BELFAST



Bridge to Pump House



Pump House entrance

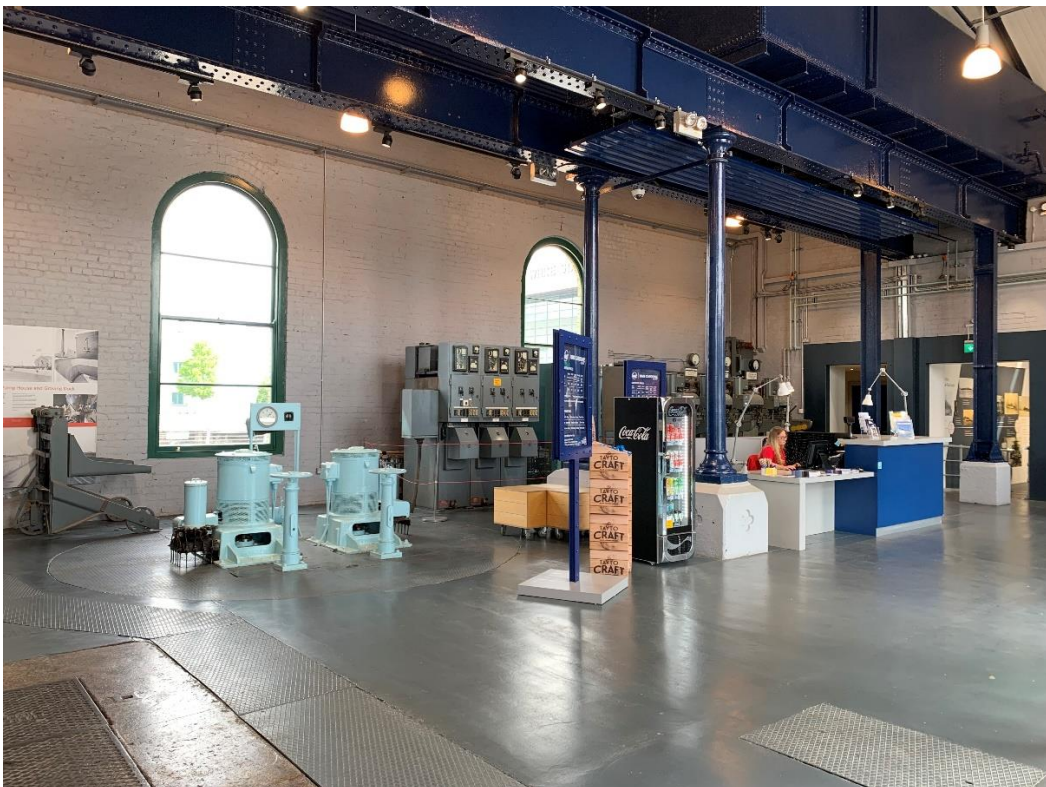


HMS CAROLINE

BELFAST

Pump House

- There is a reception desk located inside the Pump House where you can pay for or collect your tickets. You will also receive your map and audio guide here.
- Wheelchairs are available on request.



- There are two galleries in the Pump House.
- They contain exhibitions with text panels and images as well as objects in glass display cases.
- Exhibition panels in the Pump House (and on the ship) on average contain heading text at font size 32 and main body text at font size 24.



HMS CAROLINE

BELFAST



- You will exit the Pump House via automatic doors located in gallery two of the Pump House.

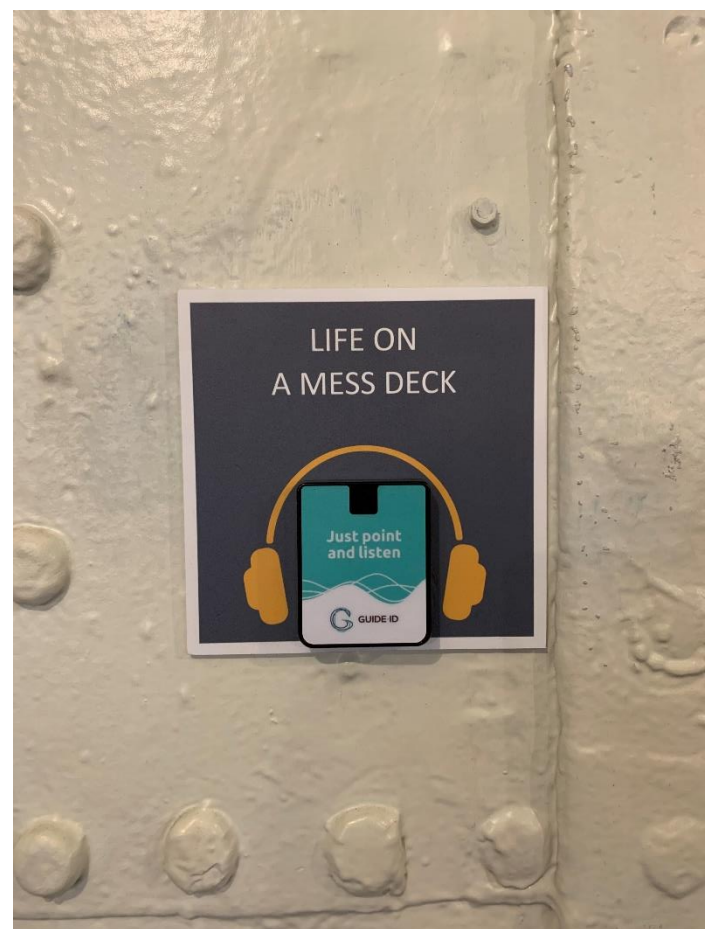
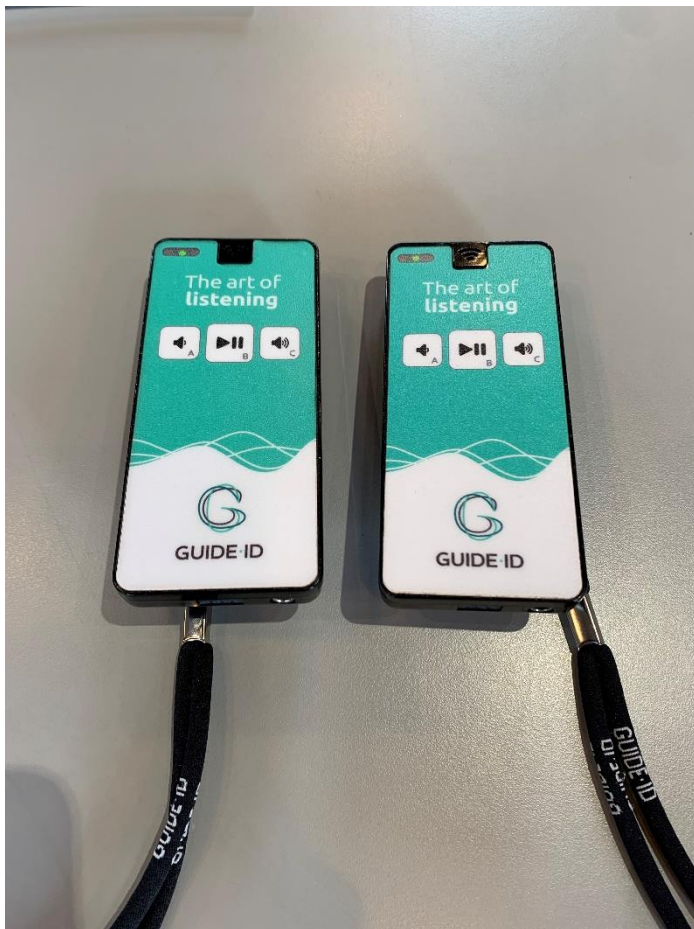


HMS CAROLINE

BELFAST

Audio Guides

- The audio guide tour is for use on board the ship only (not in the Pump House). It can be activated by pointing the handheld device at the audio guide points throughout the ship and clicking the black 'play/pause' button. The audio may be paused at any point by pressing this button again.
- The volume of the audio guide can be altered by pressing the volume up or volume down buttons.
- Please note, audio guide points on the ship are at varying height levels.



Audio guide device & audio guide point

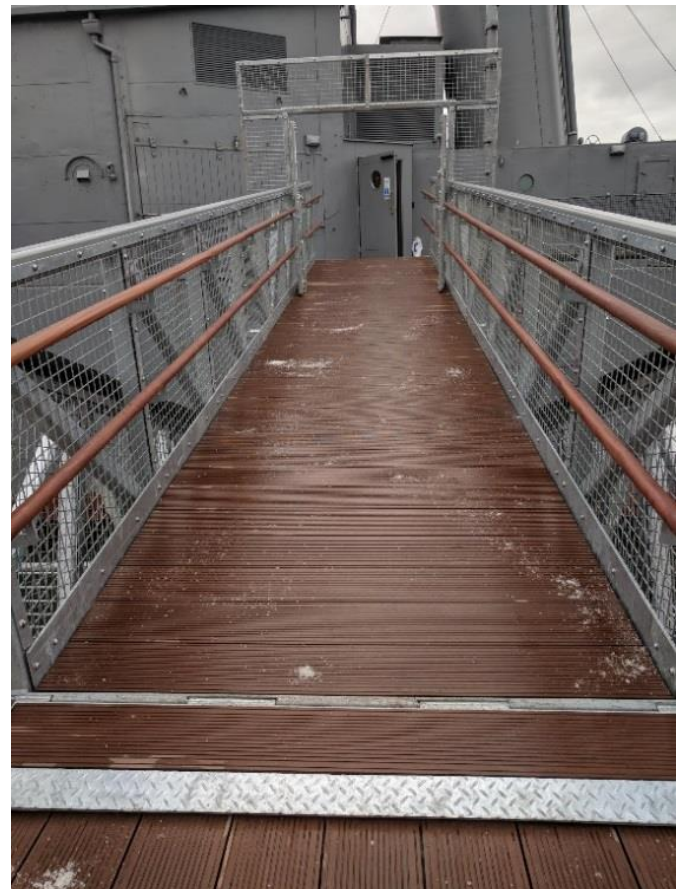


HMS CAROLINE

BELFAST

Entrance and Boarding HMS Caroline

- Entrance to the ship is via a gangway. The gangway is level and wheelchair accessible with a handrail either side, however the angle of the gangway may change according to tide levels. Here is a link to the tide timetable:
<https://www.belfast-harbour.co.uk/tide-tables/>
- In windy weather the gangway may move slightly as the ship sways in the water.
- Throughout the tour, historic spaces on the ship play different soundscapes to recreate sounds that would have been heard in the various areas in the First World War.
- Light levels vary throughout the different areas of the ship.





HMS CAROLINE

BELFAST



Left: Gangway at Low tide

Below: Gangway at high tide



Upper deck

- The tour of the ship begins in the Drill Hall, which is located through the door on the left at the top of the gangway. The Drill Hall has seating and exhibition panels.
- Projected in the Drill Hall is a short film depicting the Battle of Jutland. While the film plays, the lights in the Drill Hall dim. The film is played at a high volume and contains scenes that some may find upsetting. Visitors may skip the film if they wish.



HMS CAROLINE

BELFAST

- The exit from the Drill Hall and on to the rest of the tour is located at the other side of the room.



Drill Hall with film

- On exiting the Drill Hall, visitors can make their way into the Captain's Quarters. The doorway into the Captain's Quarters is inaccessible by wheelchair.
- Visitors can take an alternative level route along the deck to the left of the doorway. This bypasses the Captain's Quarters, however there is an audio guide point along the wall to the right which provides a description of the area.



HMS CAROLINE

BELFAST



Accessible route past the Captain's Quarters



Doorway into the Captain's Quarters

- Both routes come out on to the Quarterdeck. Please note, the deck may be slippery in wet weather.
- The Lower Deck can be accessed by lift or stairs; some stairs may be steep.

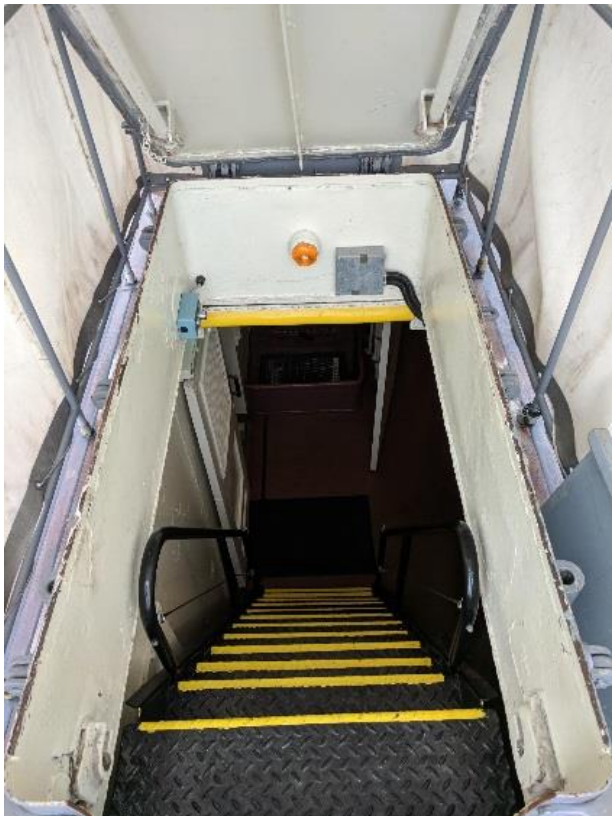


HMS CAROLINE

BELFAST



Quarterdeck



Stairs to the Lower Deck



Lift to the Lower Deck

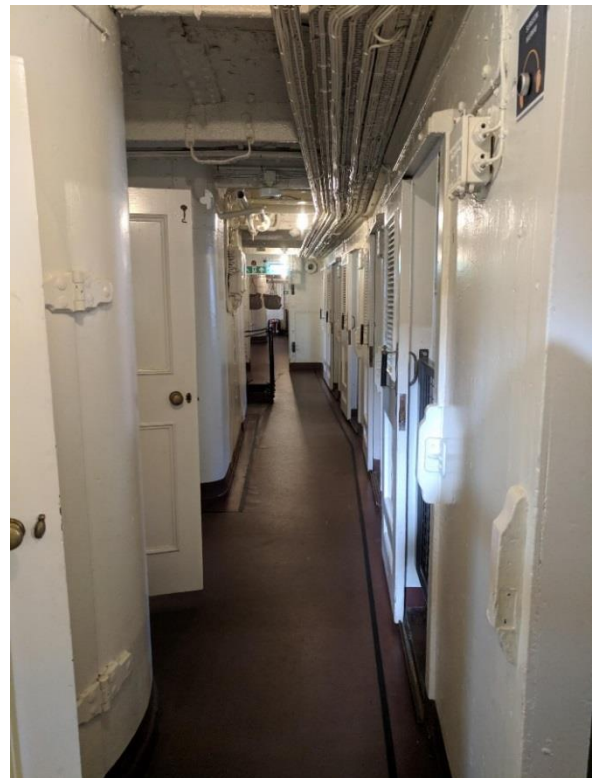


HMS CAROLINE

BELFAST

Lower Deck

- The Lower Deck contains several restored historic spaces and is mostly level.
- Areas of the Lower Deck also contain interactive displays and activities.
- Corridors on the Lower Deck may be narrow in some areas; some of the compartments are confined or smaller spaces.
- Some historic spaces have small steps at the doorways.
- Light levels vary in different areas along the Lower Deck.





HMS CAROLINE

BELFAST

Engine Rooms

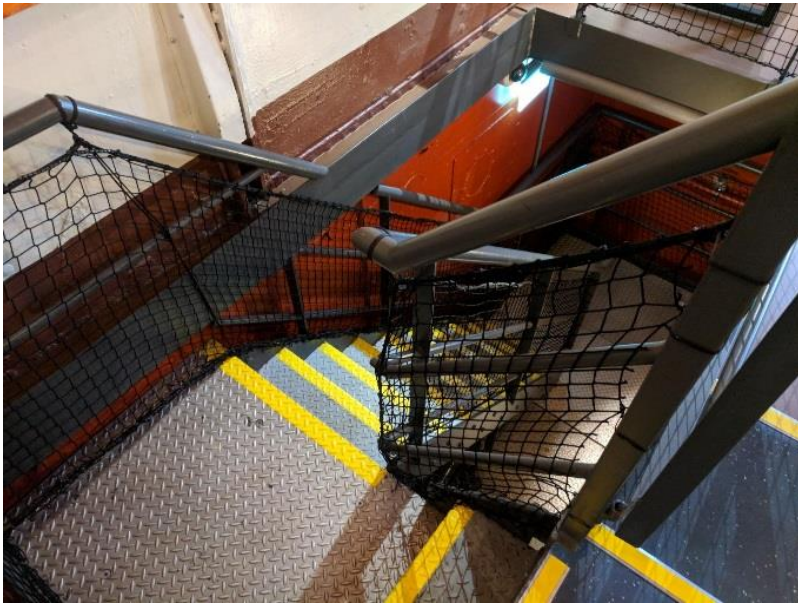
- Access to the Engine Rooms is located in the middle of the Lower Deck.
- The Engine Rooms are accessible by stairs only.
- Visitors walk along a raised platform to view the engines.
- Inside the Engine Rooms, an audio visual display is projected on the engines. This recreates the sounds of the engines and is played at a high volume.
- The Engine Rooms are dimly lit and there is a strong smell of oil from the turbines in this area.



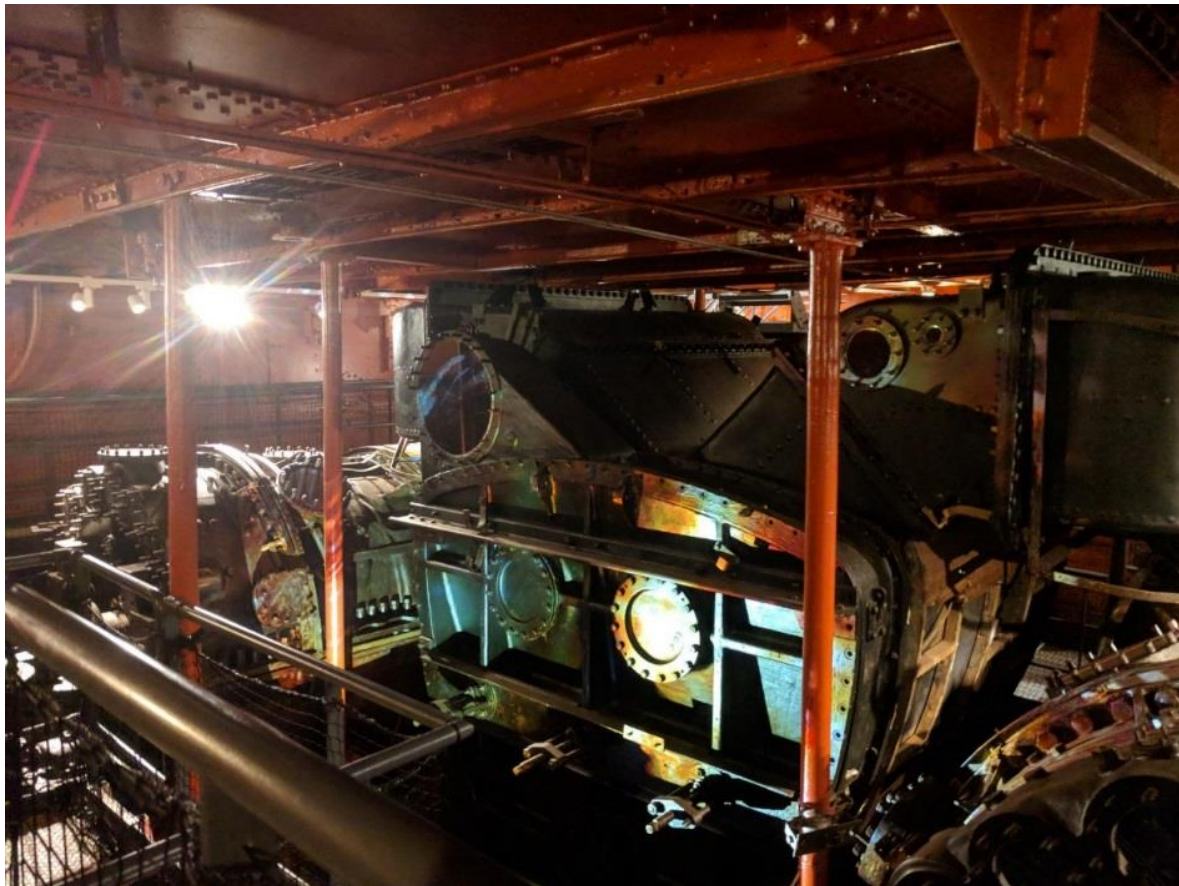


HMS CAROLINE

BELFAST



Stairs to the Engine Rooms

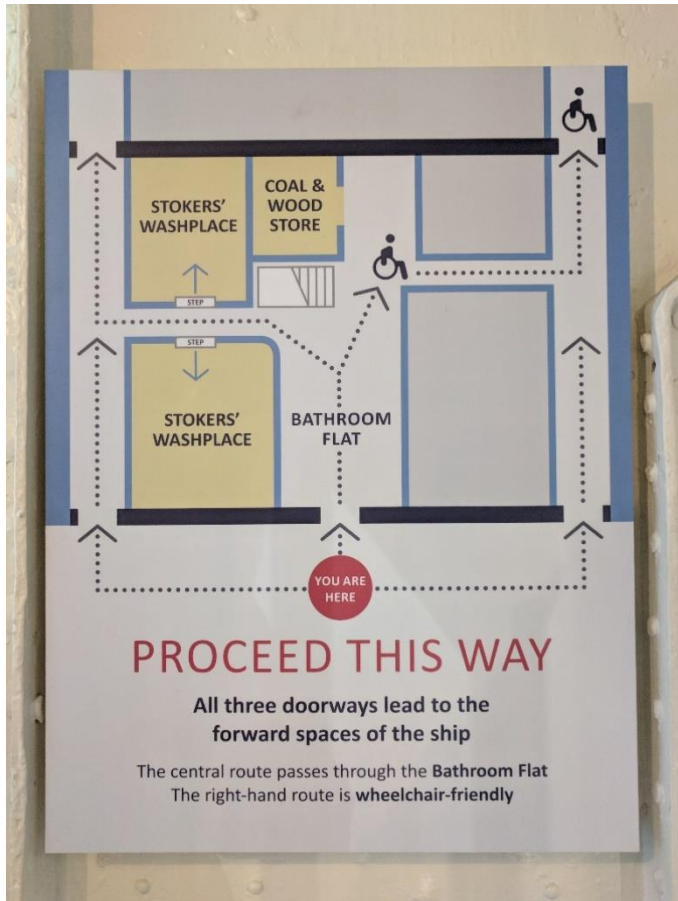


Inside the Engine Rooms



HMS CAROLINE

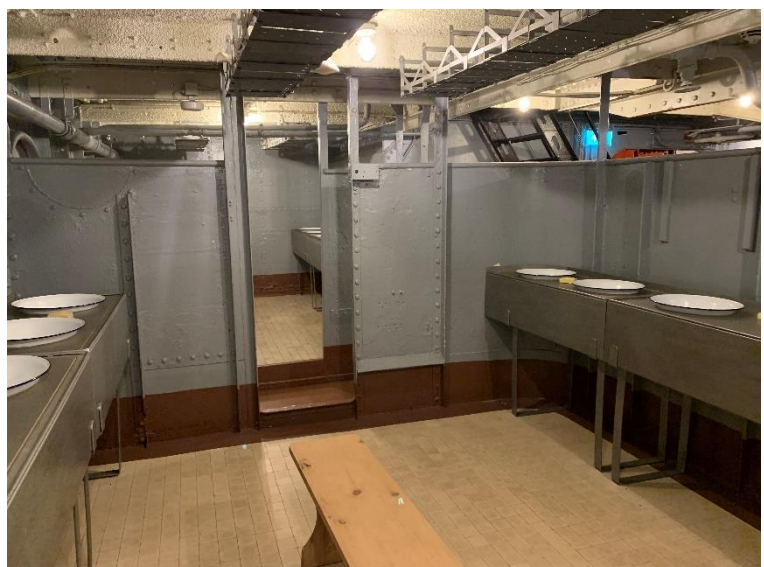
BELFAST



Direction sign located in the Dazzle Zone/Torpedo School area

- Visitors exit the Engine Rooms via a staircase. This will lead into two areas – the Torpedo School and Dazzle Zone. These spaces contain information panels, and interactive games and interpretation.

- There are three doorways at the other end of the Torpedo School and Dazzle Zone (to the Engine Rooms staircase). The central doorway leads to the Stokers' Washplaces and also the Coal and Wood Store. The Stokers' Washplaces are not wheelchair accessible; there are raised steps into both spaces.



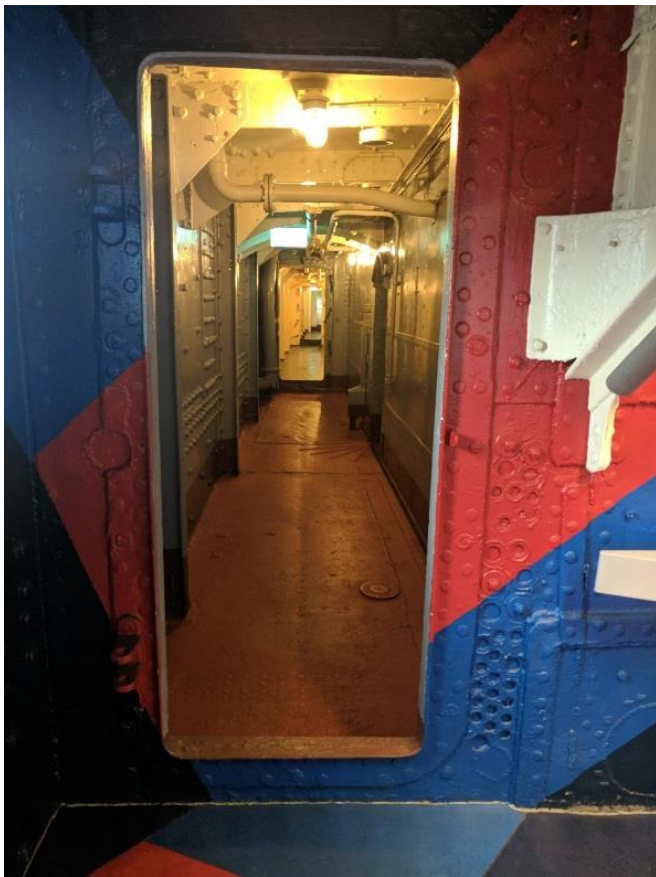
Stokers' Washplaces with raised steps



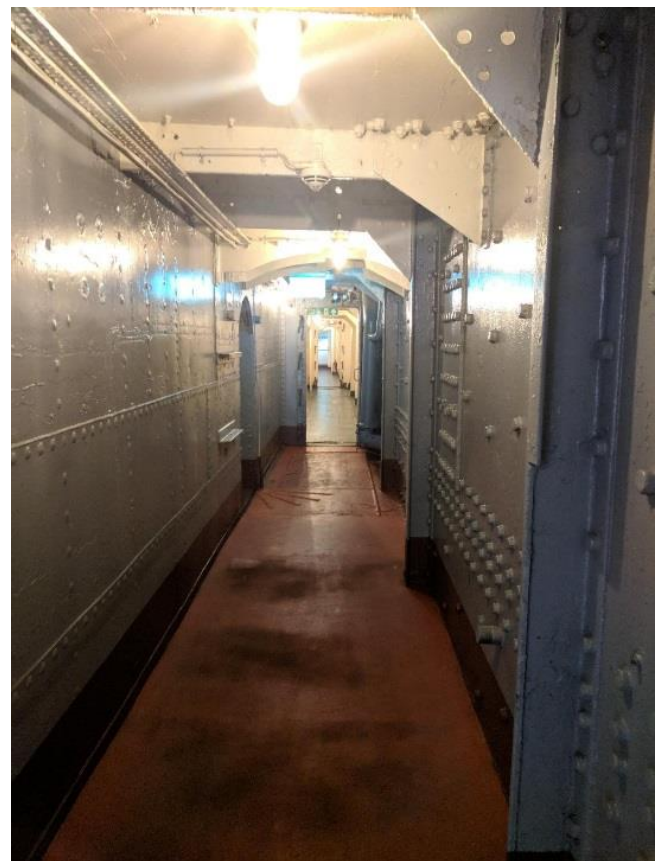
HMS CAROLINE

BELFAST

- The other two routes contain corridors leading to the next area of the ship. Both corridors lead to the same place. The left corridor (from the Dazzle Zone) contains high steps (over the watertight doors); it is not wheelchair accessible. The right corridor (from the Torpedo School) is wheelchair accessible. Both corridors have slightly uneven floors and low lighting.



Left corridor with raised doorways



Right corridor – wheelchair accessible



HMS CAROLINE

BELFAST

Café



- Following the corridors, visitors can proceed straight ahead into the on-board café.
- The café offers a selection of hot drinks, soft drinks and tray bakes.
- The café is level throughout. It contains seating areas with benches that can be moved. High chairs for children are also available.
- This area may have strong smells of food and possibly crowds of visitors at the tables. Sometimes music is played in the café.
- There is a visual menu available on request.
- To continue the tour back on the Upper Deck, visitors can exit the café via a set of stairs or a lift located inside the café.



HMS CAROLINE

BELFAST



Café exit stairs



Café exit lift

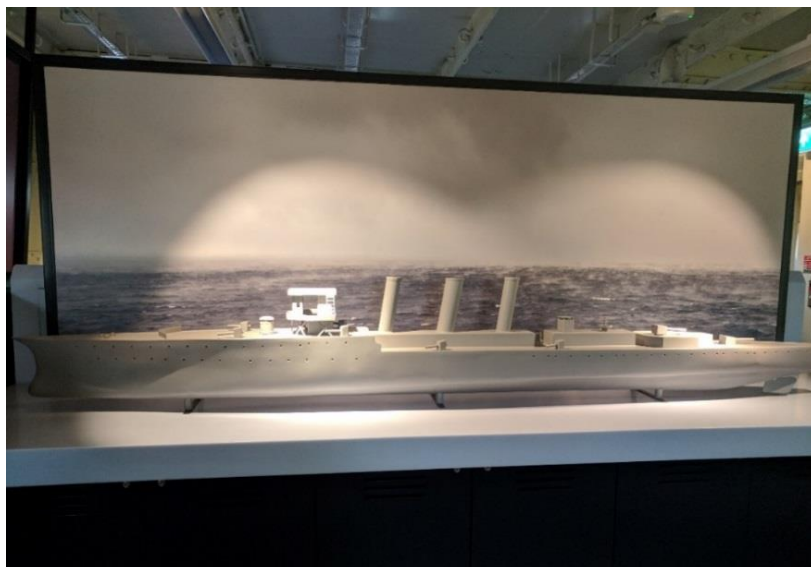


HMS CAROLINE

BELFAST

Virtual Access Suite

- On exiting the café, visitors can visit the Virtual Access Suite. The Virtual Access Suite provides access to remote and hidden areas of HMS Caroline as well as additional historic information and archival material.
- There are several interactive displays, activities and a tactile model of the ship. Some of the exhibits and activities in this area play sound at a high volume.
- There are some seating areas in the Virtual Access Suite.





HMS CAROLINE

BELFAST

Forecastle

- Visitors can continue out of the Virtual Access Suite, past the Sick Bay and Galley and outside on to the deck.
- From here, the Forecastle is accessible by a set of stairs or a lift.



Lift and stairs to Forecastle



Forecastle



HMS CAROLINE

BELFAST

- From the Forecastle, the Navigating Bridge above can be accessed by stairs only.
- These stairs are quite steep and can be slippery in wet weather.
- The Navigating Bridge contains confined areas such as the Day Cabins.



Stairs to Navigating Bridge



Navigating Bridge



HMS CAROLINE

BELFAST

Gift Shop

- The on-board gift shop can be accessed by stairs or lift back down from the Forecastle.
- There are two doorways for entrance in to the gift shop. The doorway on the same side as the lift is wheelchair accessible with a small ramp.
- Please note, there is a corner of a display unit inside the shop quite closed to the accessible doorway.
- The gift shop offers a variety of souvenirs.
- Visitors return their audio guides to staff in the gift shop.
- Inside the shop is level, however, this area is slightly confined and some visitors may have issues with manoeuvrability around the shop.
- The gift shop can get crowded if there is a large group of people inside at the one time.
- A soundscape may be playing inside the shop and there is a florescent light that changes colours.



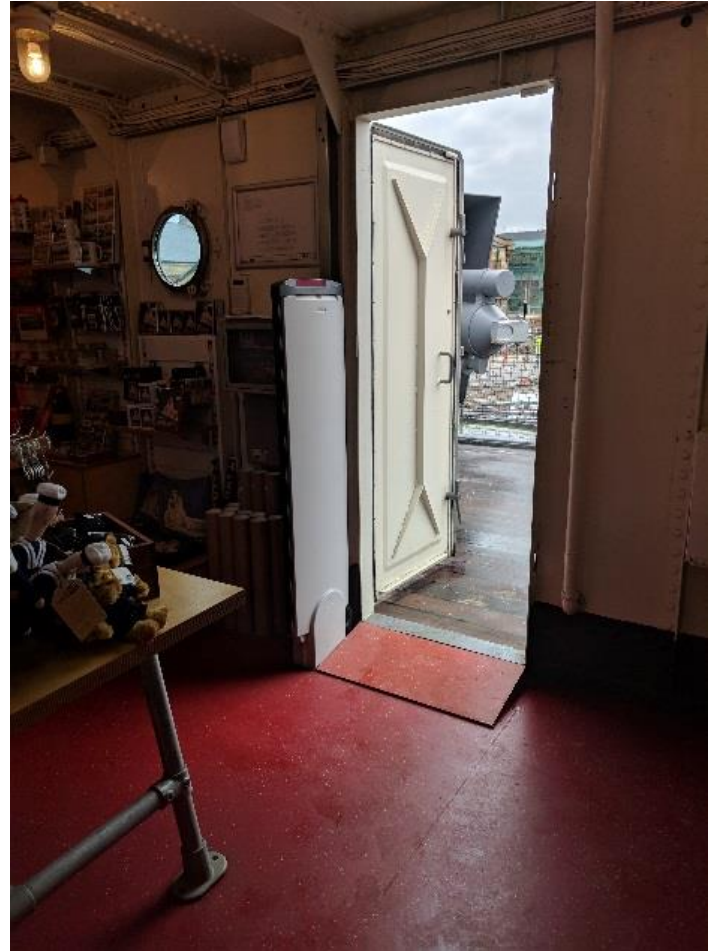


HMS CAROLINE

BELFAST



Raised doorway into the gift shop (if viewing from the Forecastle this is located down the stairway on the right side).



Accessible doorway in to the gift shop (located on the same side as the lift back down from the Forecastle).



HMS CAROLINE

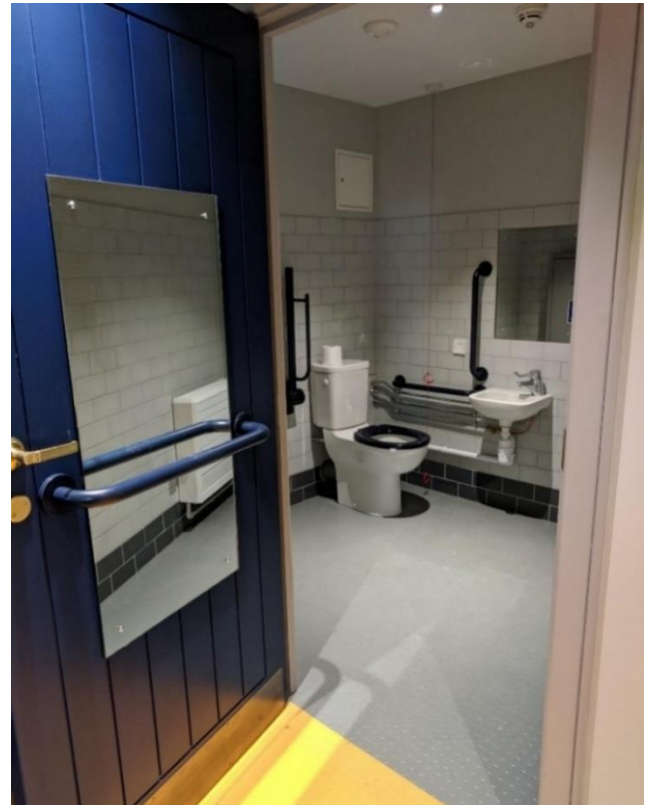
BELFAST

Toilets

- There are toilets in the Pump House, including one unisex accessible toilet. These are located to the right of the ticket desk.
- The ship has ladies' and gent's toilets on-board the ship. Both are located on the Upper Deck. The ladies' toilets are opposite the Sick Bay and the gent's toilets near the Galley.
- There are two unisex accessible toilets on-board. One is located before the entrance to the Drill Hall on the right-hand-side, opposite the red desk. Another is located past the gent's toilets, opposite the Galley.
- Accessible toilets contain baby changing areas, hand rails, mirrors, and alarm chords.
- All toilets contain electric hand dryers.



Pump House toilets



Pump House accessible toilet



HMS CAROLINE

BELFAST



Ladies' on-board toilets

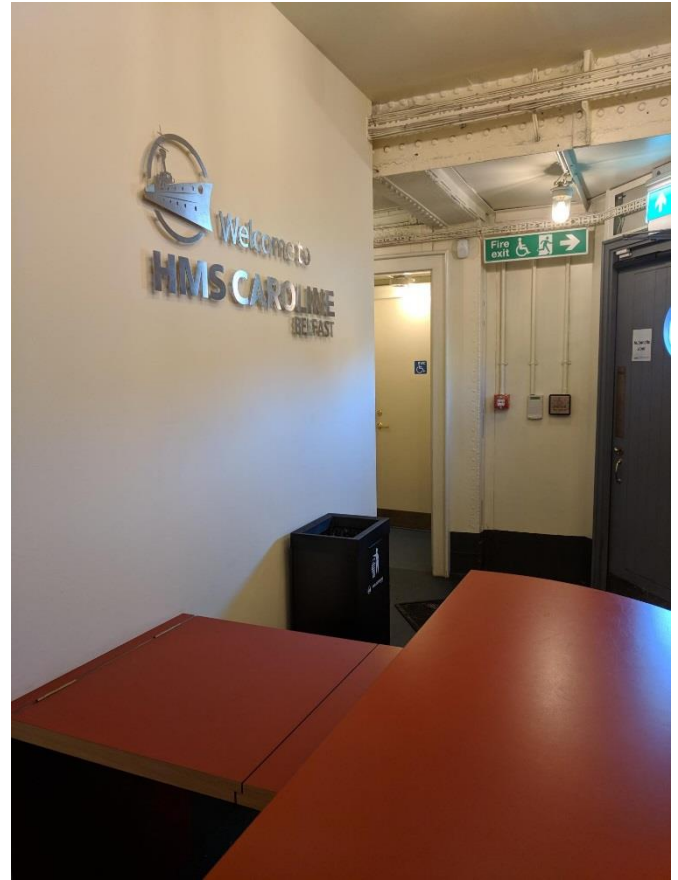


Gent's on-board toilets



HMS CAROLINE

BELFAST



On-board accessible toilet outside Drill Hall



On-board accessible toilet opposite Galley



HMS CAROLINE

BELFAST

Additional information

- Accompanying essential companions are entitled to free admission to the museum. These tickets can be booked online or upon arrival.
- Please be advised that access to the ship will be restricted for the safety of accessible users during periods of high tide.
- We would suggest to visitors with additional mobility requirements to come 60 minutes either side of high tide as the gangway can become steep as the tide rises. Here is a link to the tide timetable: <https://www.belfast-harbour.co.uk/tide-tables/>
- The narrowest door on the ship is 64cm.
- When inside the lifts, please be advised to stay clear of the lift sides and doors to ensure the lift does not stop. This is an emergency safety feature.
- Please note, high heels with a diameter smaller than a 2p coin (2.5cm) cannot be worn on board the ship. Heel caps that can be fitted should be purchased in advance.
- We have evacuation procedures. In the unlikely event of an evacuation, a member of staff will assist you to evacuate out of the building or ship. In the event of an emergency, on-board lifts can be used up to ten times.
- There are automatic doors in various areas throughout the ship.
- We welcome assistance dogs; a water bowl is available at the ticketing desk on request.



HMS CAROLINE

BELFAST

Contact

We welcome any feedback and suggestions to ensure everyone has the opportunity to have an enjoyable and engaging visit to HMS Caroline.

Address: HMS Caroline, Alexandra Dock, Queen's Rd, Belfast, BT3 9DT

Email: learning.caroline@nmrn.org.uk

Phone: 028 9045 4484